

E550 meter



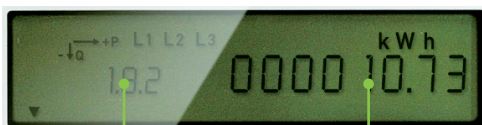
1. Reset button and battery door (sealed)
2. Display scroll button
3. Alarm LED
4. Optical interface

In the standard mode, the meter display scrolls register values in accordance with the program. The readings on the display change approximately every 10 seconds. The reading identifier indicates which reading is currently displayed. If necessary, scroll through the readings using the scroll button on the screen:

1. Press the scroll button briefly until 88888888 appears on the display.
2. Press the scroll button again until the text Std_dAtA appears on the display.
3. Press the scroll button for more than 2 seconds to display the reading identifier 0.0.0 = meter ID number

Reading the display

Normal status of the display:



Reading identifier Energy reading

Reading identifiers:

- 0.9.1 time
- 0.9.2 date
- 1.8.1 Total energy reading, cumulative
- 1.8.2 A+, kWh, time-based electricity, daytime 7 a.m. to 10 p.m.
- 1.8.3 A+, kWh, time-based electricity, nighttime 10 p.m. to 7 a.m.
- 1.8.0 Lifetime register A+
- 2.8.0 Lifetime register A-
- 3.8.0 Lifetime register R+
- 4.8.0 Lifetime register R-

By briefly pressing the scroll button on the screen, you can read the conversion ratio and the instantaneous values of the current transformer. The display returns to its initial state approximately one minute after the last button press.

The optical interface receives light signals, such as the light of a torch. The light signal also acts as a display button and controls the display like a physical push button.

This display control function is only available when the meter is energised. Depending on the intensity of the light source, the reader can also control the display from a short distance, for example through a protective glass plate. The function does not work with an LED bulb lamp. It requires a filament bulb.

The wiring diagram can be found on the inside of the cover-plate.